

# **CDRI at COP29**

## **Resilient Infrastructure : Resilient World**







# CDRI at COP29

## Resilient Infrastructure : Resilient World









# Introduction

As climate disruptions are intensifying, adaptation has become central to international negotiations and discussions recognising the need to support communities and systems to withstand and recover from climate shocks. Disaster resilient infrastructure is a key element of effective adaptation.

At COP29, held in Baku, Azerbaijan, from 11–22 November 2024, CDRI established the first “Disaster Resilient Infrastructure (DRI) Pavilion” with the theme “Resilient Infrastructure: Resilient World.” This pavilion offered a dedicated space for the international community to explore the need for DRI, to share good practices, build partnerships, and agree on action plans to support those most vulnerable.

In addition to delivering a successful pavilion programme, as an International Organization accredited to the UNFCCC, the Coalition advocated for a greater focus on resilient infrastructure directly to the UNFCCC Parties. The Director General’s statement in the High-Level Segment for IGOs on 20 November, made the case for sufficient adaptation financing to build resilience. The statement emphasized that decisions made in Baku should support the world to lock in resilience rather than risk.

## DRI Pavilion | Resilient Infrastructure: Resilient World

The CDRI Secretariat curated a programme designed to drive action towards mainstreaming risk-informed infrastructure investments to safeguard essential services, lives and livelihoods from natural hazards and climate extremes. The DRI pavilion provided a space for Coalition members and partner organizations to convene high-level discussions focused on DRI. It also allowed CDRI to showcase its initiatives and knowledge products to global audiences, enhancing awareness of its mission, programmes, and impactful work.

The pavilion featured high-profile engagements, bilateral meetings, and partnerships, reinforcing CDRI’s role as a leader in convening and advancing the global conversation on DRI. Media engagements and high-level speaking opportunities further amplified CDRI’s visibility at this major global event.



Left to Right: Aishwarya Pillai, CDRI | Minister Munro-Knight, Barbados | Max Puig, Executive Vice President, NCCCCDM, Dominican Republic | Anna Walters, UK Government | Taulili Kalavini Mauaiaivao, Government of Samoa | Stefano Signore, European Commission | Amit Prothi, DG, CDRI



# Key Achievements

## Strategic and Comprehensive Pavilion Programme



- a. 32 sessions, engaging 145 global experts.
- b. Sessions delivered in partnership with five countries—India, Madagascar, Solomon Islands, Tonga, and Tuvalu—and 24 partner organizations.
- c. Broad programme covering innovative financing, governance, data and technology, and nature-based solutions as critical enablers of risk-informed infrastructure decisions, with a focus on supporting vulnerable regions such as Small Island Developing States (SIDS) and Least Developed Countries (LDCs).

## Wide Reach and High-Level Engagements



- a. CDRI Secretariat engaged with 30 countries and 87 organizations, many for the first time.
- b. High-level speakers, including the Prime Minister of Tonga, Hon. Hu'akavemeiliku Siaosi Sovaleni and ministers from multiple nations as well as celebrities, including UNHCR Goodwill Ambassador and Actor Theodore James, spoke at the pavilion.

## CDRI Announcements



- a. US\$ 8 million to support DRI in SIDS under the IRIS programme.
- b. A new Mountain Resilience Programme.

## CDRI Product Launches



- a. Guidelines for Extreme Heat Management in Public Transport Systems.
- b. Report on “Transport Infrastructure Reimagined: Forging Resilient Connections – An Integrated Framework to Unlocking Resilience Dividends for South Asia” in partnership with BCG.
- c. Playbook on Physical Climate Risk Assessment for the Financial Sector.

## MOU Signing



- a. Signing of MOU between CDRI and United Nations Economic and Social Commission for Asia and the Pacific (UNESCAP).





## International Job Fair

- CDRI organized an International Job Fair along with a session on 'Bridging the Ambition Gap with Future-ready DRI Professionals'.

## Media Engagements

- Media Coverage:** 30+ including in APBU, Track Changes podcast, OECS, Global Syndicate, India Today, DD India, Moneycontrol.com, IANS etc.
- Interviews/Interactions:** 30 interviews and interactions with The New York Times, The Economist, Financial Times, Deutsche Welle, Reuters and Reuters Foundation, Earth Journalism Network, Sustainability Online, Devex, India Today, Economic Times, Indian Express, ACS Network, Times of India, Asia-Pacific Broadcasting Union, etc.
- Events:** DG Amit Prothi's speaking opportunities at 2 events - FT Live@COP29.
- Sessions:** 'Communicating Climate Resilience' session with a panel of ED Mahila Housing Trust, Deputy Editor Indian Express, Assistant Editor Economic Times, and Senior Director, DEY.
- Social Media Analytics (9 Nov - 20 Nov):** LinkedIn saw an engagement rate increase of 367% with 66% page views and 36% unique visitors, a maximum CTR of 32% for the posts on 14 and 15 November. X also registered a growth in followers and an increase in engagement.



| Wednesday, 15 November – Advocacy, Gender and Inclusivity      |   |   |  |
|--|---|---|--|
| Time (AZT)   | Sessions  | Session Hosts   |  |
| 09:45 – 11:00  | 1.5 for 1.5 – Ensuring Transparency of Government Actions in Climate Finance  | UNDP Government of Tonga, Government of Solomon Islands, Government of Tuvalu |  |
| 11:30 – 12:30  | Mobilizing Private Finance for Gender-Responsive Climate Resilient Infrastructure   | The Commonwealth Secretariat  |  |
| 13:30 – 14:30  | Communicating Climate Resilience  | CDRI  |  |
| 15:00 – 16:00  | CDRI Talent Connection: Meet the Team   | CDRI  |  |
| Saturday, 16 November – Resilient Infrastructure Systems       |   |   |  |
| Time (AZT)   | Sessions  | Session Hosts   |  |
| 09:45 – 11:15  | Mountain Infrastructure for a Changing Climate: Adapting to Heightened Risks  | CDRI  |  |
| 11:45 – 12:15  | Building Climate-Resilient Health Infrastructure  | HREX  |  |
| 13:45 – 14:45  | Building Climate-Resilient Infrastructure in the Pacific  | UNOPS   |  |
| 15:30 – 16:30  | Bridging the Ambition Gap with Future-Ready DRI Professionals   | CDRI  |  |
| Monday, 18 November – Resilient Infrastructure Systems         |   |   |  |
| Time (AZT)   | Sessions  | Session Hosts   |  |
| 10:00 – 11:30  | Resilient Infrastructure in Transportation: Rebuilding Resilient Communities  | Government of Brazil, CDRI  |  |
| 12:00 – 12:15  | Promoting Resilient Infrastructure in Madagascar  | Government of Madagascar  |  |
| 13:45 – 15:00  | Towards Resilient Health Infrastructure   | CDRI  |  |
| 15:45 – 17:15  | Unlocking Investments for Climate Resilient and Sustainable Infrastructure in SIDS  | CDRI  |  |
| Tuesday, 19 November – Urban Resilience                        |   |   |  |
| Time (AZT)   | Sessions  | Session Hosts   |  |
| 12:00 – 12:15  | Extreme Heat and Flood Resilience: Protecting Urban Infrastructure Systems  | CDRI  |  |
| 13:45 – 15:15  | Unpacking Systemic Resilience of Infrastructure Networks  | BCIX, CDRI  |  |
| 15:45 – 17:15  | Investigating in Climate Resilience of Healthcare Systems in LMICs: Navigating Challenges and Opportunities                         | CEEW  |  |
| Wednesday, 20 November – Nature and Ecosystem-based Approaches |   |   |  |
| Time (AZT)   | Sessions  | Session Hosts   |  |
| 10:00 – 11:30  | Nature-positive Engineering and the Opportunity to Protect, Restore and Harness Biodiversity through Infrastructure                 | ICSI, Conservation International  |  |
| 12:00 – 12:15  | Designing and Implementing Resilient Infrastructure based on Nature-based Solutions   | The Commonwealth Secretariat  |  |
| 13:45 – 15:00  | Safeguarding Coastal Ecosystems for Infrastructure Resilience   | CDRI  |  |
| 15:30 – 16:45  | Nature-based Solutions for Building Resilient Infrastructure in the Global South: Role of Policy, Finance and Technology            | ICC, CEEW, WRI  |  |
| Thursday, 21 November – Infrastructure for Climate Resilience  |   |   |  |
| Time (AZT)   | Sessions  | Session Hosts   |  |
| 10:00 – 10:45  | Are You Listening? What Climate Tech Investors and Infrastructure Engineers can Learn from Each Other                               | Anup, Kompas VC   |  |
| 11:15 – 12:45  | Fostering SMART Investments through democratizing climate data for Climate and Disaster Resilient Infrastructure                    | IPE Global  |  |
| 13:15 – 14:30  | Resilient Infrastructure for a Changing Climate: Leveraging GRI and ESCAP Risk & Resilience Data Platforms                          | UNESCAP   |  |
| Tuesday, 12 November – Finance                                 |   |   |  |
| Time (AZT)   | Sessions  | Session Hosts   |  |
| 09:45 – 11:00  | Enhancing Global Infrastructure Resilience Amidst Climate Risks   | CDRI  |  |
| 11:30 – 12:45  | Building Resilience from the Ground Up: Upstream Interventions in Project Finance Assessment  | CDRI, PwC   |  |
| 13:15 – 14:30  | Unlocking Finance for Resilient Infrastructure by Enabling Better Climate Physical Risk   | Dalberg Advisors, CDRI  |  |
| 15:00 – 16:15  | Mobilizing Private Sector Investment for Disaster-Resilient Infrastructure in Emerging Markets and Developing Economies             | CDRI, ARISE Network   |  |
| 16:45 – 18:00  | Public Finance at the Forefront: Integrating Disaster Risk into Development & Financial Planning                                    | CDRI, ADPC  |  |
| Wednesday, 13 November – Data and Technology                   |   |   |  |
| Time (AZT)   | Sessions  | Session Hosts   |  |
| 09:45 – 11:30  | Enhancing Climate and Disaster Resilience of Infrastructure through Technology  | ICSI, Bentley Systems, KPMG   |  |
| 12:00 – 13:15  | Leveraging Data and Technology for Infrastructure Risk Resilience   | CDRI  |  |
| 13:45 – 15:15  | Enhancing Infrastructure Resilience through Advanced Engineering Solutions  | Miyamoto International  |  |
| 15:45 – 17:15  | Integrating Disaster Resilient Infrastructure into the Adaptation Strategies  | CDRI, Government of India   |  |
| Thursday, 14 November – Policy and Governance                  |   |   |  |
| Time (AZT)   | Sessions  | Session Hosts   |  |
| 09:45 – 11:00  | Accelerating Climate Finance Access and Mobilization in the Pacific Region  | PfIS  |  |
| 11:30 – 12:45  | Safeguarding Investments in Disaster Resilient Infrastructure through Strengthened Governance                                       | UNDRR   |  |
| 13:15 – 14:30  | Using UNDRR's Principles for Resilient Infrastructure for Enhancing Infrastructure Resilience                                       | UNDRR, ICSI   |  |
| 15:00 – 16:15  | The UNHCR Climate Resilience Fund: Investing in Climate-Resilient Infrastructure for Displaced Communities                          | The Climate Group, UNHCR  |  |
| 16:45 – 18:00  | The Intersection of Conservation and Development: The Role of the International Big Cat Alliance in Safeguarding Wildlife Corridors | IBCA  |  |



## Key Recommendations from the DRI pavilion

The clear message across all sessions was the need to invest in climate and disaster resilient infrastructure. Investing in DRI produces a resilience dividend that includes avoided asset loss, reduced service disruption, increased quality and reliability of public services, and increased economic growth.

### 1. Invest in DRI

Scaling up adaptation financing and investments in resilient infrastructure delivers economic, environmental, and social benefits while supporting the Sustainable Development Goals (SDGs) and Paris Agreement targets. Global efforts should prioritize vulnerable regions such as SIDS and LDCs through tailored grants, concessional loans, and blended finance mechanisms. Embedding high-quality climate risk assessments into infrastructure planning is essential, alongside innovative funding mechanisms like green bonds and risk pooling.

### 2. Use Data and Technology as Enablers

High-quality, granular data and advanced technologies such as AI, IoT, and satellite imagery are critical for optimizing infrastructure resilience. Platforms like CDRI's GIRI database provide risk identification and sectoral insights. Investments in data standardization, governance, and local capacity building empower regions like SIDS and Low- and Middle-income Countries (LMICs) to use data for informed planning and decision-making.

### 3. Design Bespoke Geo-Contextual Solutions

Infrastructure solutions must address specific geographic and climate vulnerabilities.

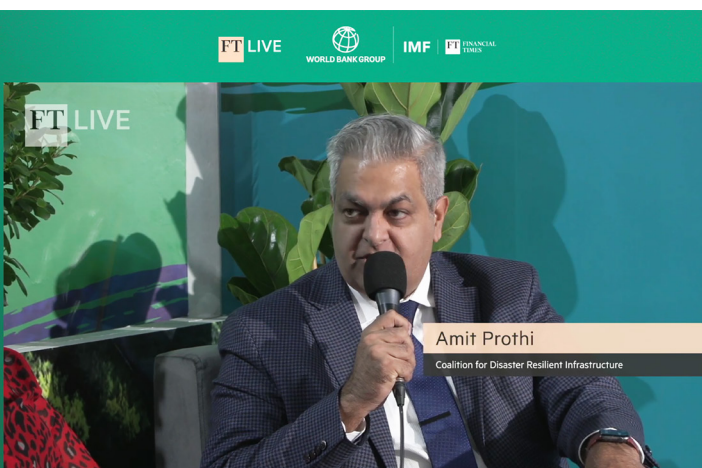
- **Mountain Regions:** Prioritize risk assessments, nature-based solutions, and connectivity improvement.
- **SIDS:** Simplify access to finance, focus on sustainable investments, and protect natural environments.
- **Urban Areas:** Leverage local data, adaptive infrastructure, and green solutions to address urban heat and flooding.

### 4. Support Community-Driven Solutions

Engaging local communities in infrastructure planning ensures contextually relevant, sustainable outcomes. Early engagement, grassroots co-design, and capacity building are essential to empower communities and ensure resilience.

### 5. Scale up Nature-Based Infrastructure Solutions (NbIS)

To scale NbIS effectively, policies must prioritize nature-positive approaches, integrate them into national climate policies, and enhance multistakeholder collaboration. Leveraging indigenous knowledge and protecting ecosystems ensure sustainability and long-term impact.



Left to Right: Zarak Khan, PIFS | Ramraj Narasimhan, CDRI | Dr. Taufa, PIFS | Hon. Hu'akavemeiliku Siaosi Sovaleni, PM of Tonga | Mathieu Verougstraete, UNDRR



# Broader CDRI advocacy at COP29

## Side Events

- a. CDRI partnered with UNEP-FI and IIGCC to deliver a session on 'Driving innovative approaches to incentivize climate resilience investments' at the COP29 Resilience Hub. During the session, CDRI showcased the Resilience Cost Benefit Analysis Tool (RCBA) designed to integrate resilience into infrastructure investments. This tool was developed in collaboration with the Department of Economic Affairs, Government of India to enable informed and risk-sensitive decisions through the lifecycle of infrastructure projects.
- b. At the Trade and Investment House Pavilion hosted by Export and Investment Promotion Agency of the Republic of Azerbaijan – AZPROMO, in collaboration with the WTO Secretariat and the ICC, ITC, and UNCTAD, CDRI launched a playbook on Physical Climate Risk Assessment for the Financial Sector supported by the Rockefeller Foundation.
- c. CDRI and UNDRR hosted a side event on Enhancing Infrastructure Resilience through Strengthened Governance to discuss practical experiences from Bhutan, Chile, Madagascar, and Tonga on improving infrastructure governance frameworks.

## Speaking Opportunities

- a. CDRI advocated for disaster resilient infrastructure while speaking at nine side events at pavilions, including the SDG, IMF-World Bank, Joint MDB, Benelux-EIB Pavilion, and Renewable Energy.
- b. CDRI spoke at the Sustainable Innovation Forum.



## Way Forward

CDRI will continue to advocate for the integration of resilient infrastructure into global climate strategies, ensuring that climate adaptation remains a central focus in future negotiations and that the momentum gained at COP29 drives tangible outcomes for vulnerable regions worldwide.

Building on the success of the COP29 DRI Pavilion, CDRI aims to deliver a pavilion with even more impact at COP30 in Brazil.









# Baku Azerbaijan

NOVEMBER 11-22  
2024





Coalition for Disaster Resilient Infrastructure



4th & 5th Floor, Bharatiya Kala Kendra,  
1, Copernicus Marg, New Delhi-110001, India



[communication@cdri.world](mailto:communication@cdri.world)



[www.cdri.world](http://www.cdri.world)



[@cdri\\_world](https://twitter.com/cdri_world)



[@coalition-for-disaster-resilient-infrastructure](https://www.linkedin.com/company/coalition-for-disaster-resilient-infrastructure)