

# Community of Practice (CoP) on Resilient Health Infrastructure

A CDRI Initiative in Collaboration with the World Health Organization

## Context

In 2023, disasters affected 93.1 million people and led to a loss of 86,473 lives<sup>1</sup>. Disasters also affect emergency and routine healthcare systems.

Functional healthcare systems are more critical during and immediately following disasters. To support healthcare systems to be resilient to disasters, CDRI and WHO are undertaking an initiative on resilient health infrastructure (RHI) focusing on:

- 1 Operational preparedness of hospitals
- 2 Resilience of hospital buildings (including structural, non-structural and functional aspects)
- 3 Resilience of critical infrastructure services that support hospital operation (such as power, telecom, transport, water and sanitation)
- 4 Resilience at community level through continuity of health services
- 5 Governance and policy (including risk-informed planning)



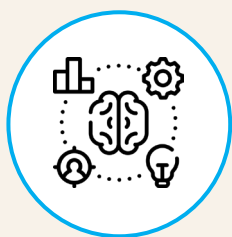
Launch of Resilient Health Infrastructure initiative in Sikkim, May 2023

<sup>1</sup> Emergency Events Database (EM-DAT) report, Centre for Research on the Epidemiology of Disasters, 2023

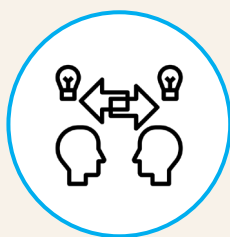
## CoP on Resilient Health Infrastructure

This Community of Practice (CoP) will act as a forum to share knowledge, bring together diverse stakeholders and institutions, exchange good practices, and collaborate on solutions towards bolstering health infrastructure resilience.

Under an initial two year action plan, the CoP will build a network of experts\* working at the intersection of disaster and climate risks, healthcare, health infrastructure, and critical infrastructure sectors, and will include thematic Working Groups. It will be hosted on CDRI's digital knowledge sharing and learning platform – DRI Connect ([driconnect.cdri.world](https://driconnect.cdri.world)).



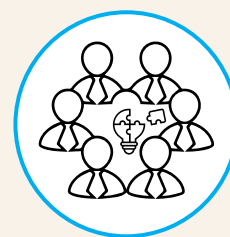
Development and dissemination of knowledge products



Exchange of good practices and case studies



Thematic dialogues and webinars



Peer learning and exchange

## Proposed Priority Areas

The CoP will specifically focus on:

Inform CDRI's global programme on resilient health infrastructure

Review of risk & resilience assessment framework and tool for health facilities

Curation and dissemination of global good practices and knowledge products

## Benefits

- Opportunity to network with and learn from global experts and peers
- Access to latest knowledge and resources
- No joining fee

## How to Join

Email: [CoP.health@cdri.world](mailto:CoP.health@cdri.world)



\*CoP seeks pro-bono support from organizations and individual experts